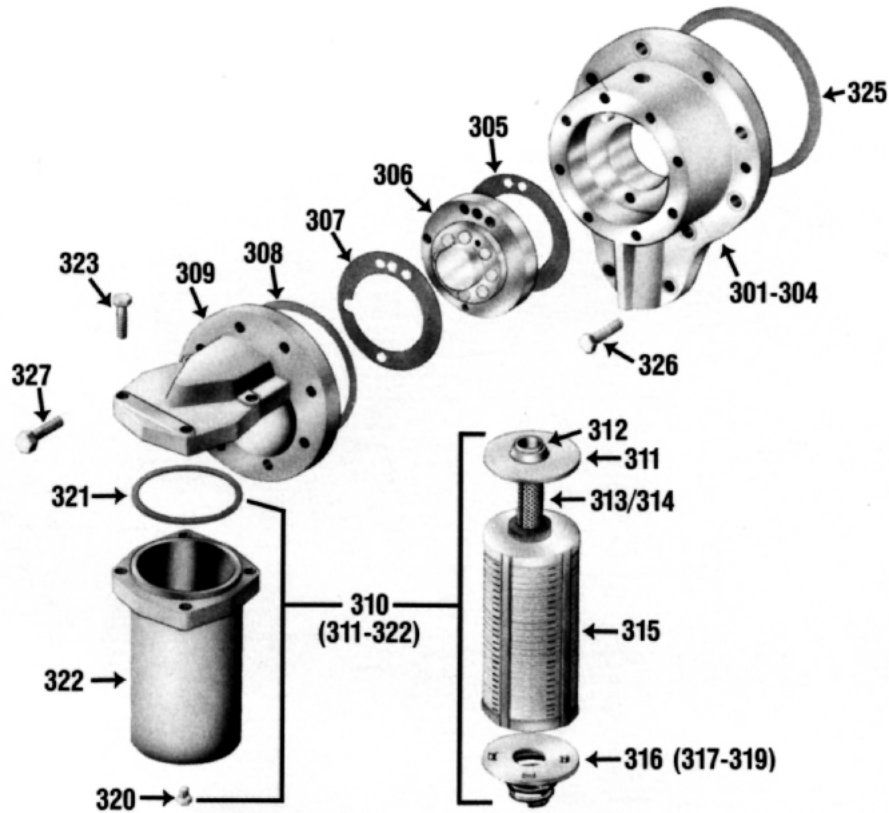


REAR BEARING COVER AND FILTER ASSEMBLY



Reference Number	440	Vilter Part Number 450	450XL	Description
301-304	KT092	KT092	KT092	Rear Bearing Cover Assembly
305	31899A	31899A	31899A	Gasket, Oil Pump Body
306	A33480A	A33480A	A33480A	Oil Pump Assembly
307-323	KT256	-	-	Conversion Kit, Std. Tri-Micro
307	31900A	31900A	31900A	Gasket, Oil Pump Cover
308	33320A	33320A	33320A	Gasket, Oil Pump and Rear Bearing Cover Seal
309	*	*	*	Cover, Oil Pump and Filter Head
310	A35240A	A35240A	A35240A	Tri-Micro Oil Filter Assembly with Bypass Relief
310	-	A35241A	-	Tri-Micro Oil Filter Assembly w/o Bypass Relief
311	1448J	1448J	1448J	Spool, Internal with Bypass Relief
311	-	2046A	-	Spool, Internal w/o Bypass Relief
312	1448H	1448H	1448H	Seal, Spool End
313	1448K	1448K	1448K	Strainer Tube
314	1448L	1448L	1448L	Ring, Strainer Tube Retaining

Reference Number	440	Vilter Part Number 450	450XL	Description
315/321	1448C	1448C	1448C	Oil Filter Element with Gasket for use with Bypass Relief
315/321	-	2115C	-	Oil Filter Element with Gasket for use w/o Bypass Relief
316	1448M	1448M	1448M	Pressure Plate Assembly
317	1448N	1448N	1448N	Pressure Plate
318	1448P	1448P	1448P	"O" Ring Seal, Pressure Plate (Not Shown)
319	1448Q	1448Q	1448Q	Spring, Pressure Plate
320	13264A	13264A	13264A	Plug, 1/8" Pipe
321	1448B	1448B	1448B	Gasket, Oil Filter Tank
322	A34623A	A34623A	A34623A	Filter Tank with Flange and Plug
323	1689G	1689G	1689G	Screw, 7/16" X 2" Hex. Head Cap
325	31890A	31890A	31890A	Gasket, Bearing Cover
326	13152E	13152E	13152E	Screw, 5/8" X 2" Hex. Head Cap
327	13153F	13153F	13153F	Screw, 1/2" X 1-3/4" Hex. Head Cap

* Check your Operator's Manual for correct Part Number for your specific compressor model.